



Regulating 3D Drop Profile Hinge

Description:

The 3D regulating hinge is a hinge which should be installed by welding on metallic doors to allow the opening and closing of the door, making possible its regulation in 3 axes.

Benefits:

- ✓ **Easy welding:** The geometry of its profile facilitates the welding by spacing from the thermal area of the axle and avoiding the possible seizure of the hinge.
- ✓ **Several regulations:** height (Y) and movement (X and Z). This hinge allows to regulate the height of the door but also its movement.
- ✓ **Easy and quick regulation:** Regulation system with Allen keys.
- ✓ **Fixing** with side fastening screws.

Material:

We manufacture this type of hinge in steel and Stainless Steel AISI 316.



Regulations

3 directions: the hinge allows 3 ways of regulation.

- ✓ **X:** Regulation in X up to **1 mm**
- ✓ **Y:** Regulation in Y **from 0 to 3,5 mm**
- ✓ **Z:** Regulation in Z up to **0,5 mm**



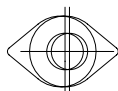
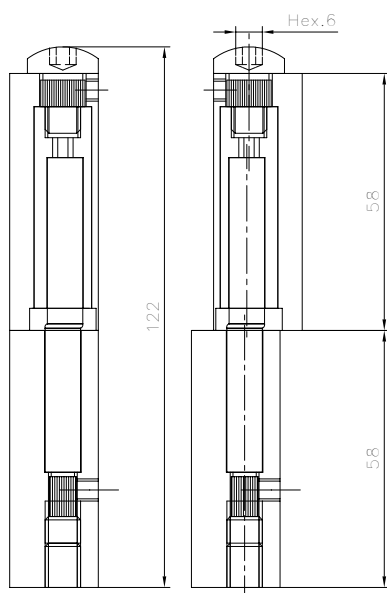
Installation

Regulation of X and Z dimensions:

1. Loosen the side fastening screws and remove the two inferior pins. Place an Allen Key in the cap and other key in the inside section of the hinge; by turning the Allen key, we reach the width and depth regulation of the hinge.
2. Once the desired sitting is reached, tighten the side fastening screws in order to block the position and place the pins of the bottom part of the hinge, by introducing first the short pin and then the long pin, tightening them at most.

Regulation of Y dimension:

1. Loosen the bottom side fastening screw, take out the long pin and, with an Allen key, tighten the short pin until the desired sitting is reached.
2. Once the desired sitting is reached, tighten the bottom side fastening screw in order to fix the axle and insert the long pin until resting against.



Cod.	Dimensions	
287	16x120	2
Stainless Steel AISI 316		
288	16x120	2

